

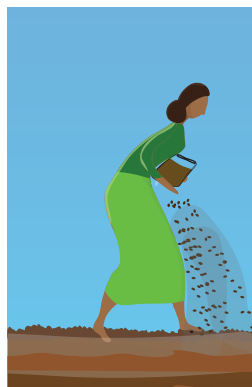
1 Land preparation

Jan	Feb	Mar	Apr
May	Jun	Jul	Aug
Sep	Oct	Nov	Dec

Prepare land for sowing



2 Sowing



Use high quality, inoculated legume seed, planted at a high seeding rate (240kg/hectare)



3 Incorporation

Jan	Feb	Mar	Apr
May	Jun	Jul	Aug
Sep	Oct	Nov	Dec



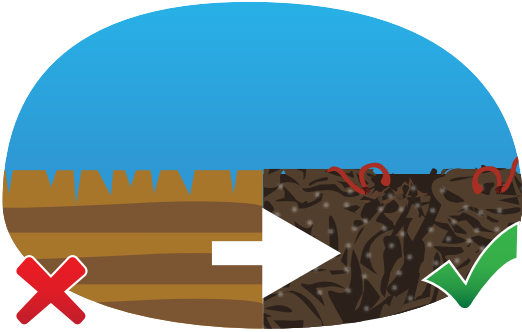
Chopping



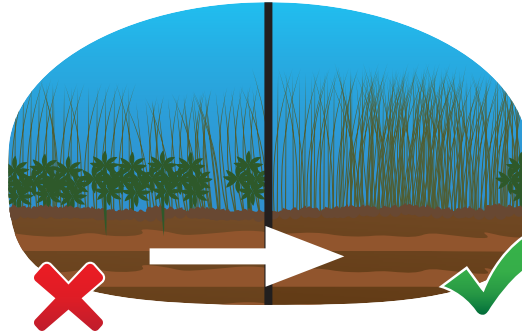
Mixing with soil



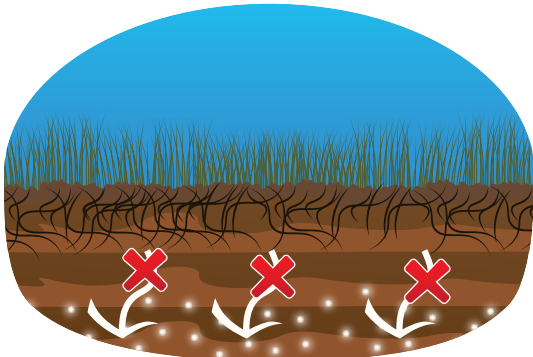
Advantages



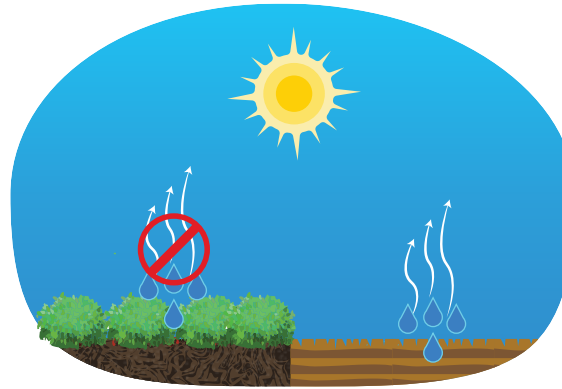
Increasing biological activity



Suppressing weeds
Increase yield of following crops



Reduce Leaching Loss



Shade the soil and reduce soil
moisture loss



Providing Animal Forage



Protect soil from wind or water erosion



Implemented by giz

Green Manuring

The practice of incorporating leguminous crops to the soil before flowering to improve soil fertility.

